

RO 40 Semi Automatic Tube Filling & Crimping Machine



RO 40 Semi Automatic Tube Filling & Crimping Machine

Key Features:

A compact pump head dosing mechanism is a key advantage of “Accunova” Tube Filling Machines. The design incorporates food-grade contact parts to ensure a contamination-free environment.

Our machines can accommodate a wide range of tube diameters and lengths. The design also provides flexibility to fine-tune the quantity of ointment being filled with high accuracy. Additionally, there is a special shut off nozzle which can be mounted to fill viscous syrups.

Within the dosing mechanism, the piston is made of Teflon while the cylinder is made of Stainless Steel (Grade 316). This combination reduces the friction between moving parts which aids smooth movement, increases the lifetime of the parts and avoids lock-ups.

All our filling machines are equipped with a control panel aimed at improving the usability of the machine. This panel provides a user-friendly interface to adjust the operating parameters of the machine and monitor the status of the machine. Our goal is to make sure operators can be trained in a short time span.

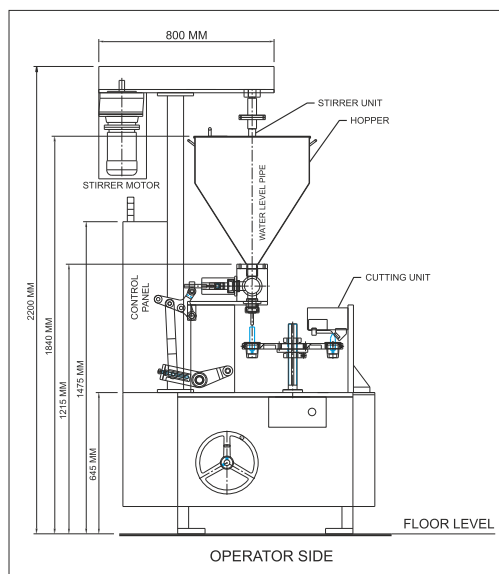
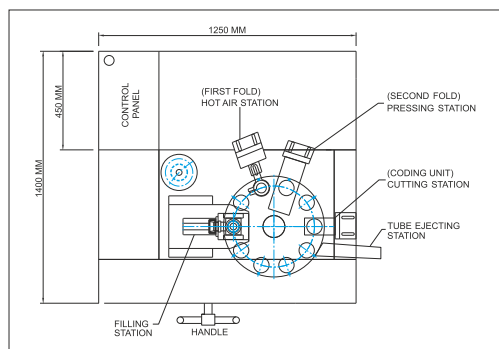
No-tube-No-fill is a standard feature we provide to reduce material wastage during the filling process. It ensures that no material is discharged if the tube is not present.

Additional Features:

- Automatic feeder pump operation to maintain the material level in the hopper above a minimum level.
- Tube cleaning station to ensure the removal of micro dust particles if present in the empty tube.
- Safety features like Emergency-stop switch, machine cover door ajar, Electrical isolation of the machine power supply from the mains 3-phase supply are also provided.
- Link mechanisms to automatically insert the filled tubes on to a carton packaging machine conveyor.
- Over-current protection for critical and heavy electrical/electronic components.

Maintenance:

Rotating movements with ball bearings and reciprocating spherical bearings running along hardened shafts, practically, need no maintenance. However, lubrication at recommended intervals to ensure smooth and uninterrupted operation is necessary.



RO 40 Semi Automatic

Technical Specifications :

| | |
|---------------|-----------------------------|
| Capacity | : 35 to 40 Tubes per Minute |
| Filling Range | : 3 gms to 200 gms |

Dimensions of the Machine :

| | |
|----------------------|--|
| Length | : 1250 (mm) |
| Width | : 1400 (mm) |
| Height | : 2350 (mm) |
| Net Weight | : 650 kg (approx) |
| Gross Weight | : 1100 kg (approx) |
| Power Consumption | : 3 kW for Al. Collapsible tubes 7 kW for Lami & Co-ex. tubes |
| Operator / Attendant | : 1 Person |
| Check Device | : No Tube - No Fill |

- NB:**
- Machine requires 10 CFT air at 6 kg/cm² pressure
 - Air compressor is not supplied with machine
 - Height with stirrer can be reduced

Accunova Engineering reserves the right to change specifications without notice.

Visit us: www.accunova.in

Reg. Office: 286-289, Shukan Mall, Science City Road,
Sola, Ahmedabad-380 060. (Gujarat) INDIA
Tele : +91 79 2771 0286 E-mail: info@accunova.in